

Marlboro Hall
Renovation and
Addition

Prince George's
Community College
301 Largo Rd, Largo, MD
20774

JCJARCHITECTURE
ONE STATE STREET
SUITE 900
BOSTON, MA 02109
617.532.6600

©2017 Weigand Associates, Inc.

- CONSULTANTS:
- Civil/ Geotech:
Triad Engineering
1075-D Sherman Avenue
Hagerstown, MD 21740
T: 301.797.6400 F: 301.797.2424
- Envelope:
Coleman Consulting
205 South Tyrone Road
Baltimore, Maryland 21212
T: 410.878.6566 F:
- Hazmat:
Aerosol Monitoring & Analysis
1331 Ashton Road, Suite A
Hanover, Maryland 21076
T: 410.684.3327 F:
- LANDSCAPE:
Flours Teetler Landscape Architects
800 N. Charles Street, Suite 300
Baltimore, MD 21201
T: 410.528.8395 F:
- LEED:
Doo Consulting
531 Piccadilly Rd.
Towson, MD 21204
T: 443.463.5859 F:
- FIRE PROTECTION
Koffel Associates
8815 Centre Park Drive, Suite 200
Columbia, MD 21046
T: 410.750.2246 F:
- MEP
WAI Weigand Associates, Inc.
20270 Goldenrod Lane
Germanstown, MD 20876
T: 301.540.9060 F: 301.540.9061
- STRUCTURAL
Silman Associates Structural Engineers
1053 31st Street NW
Washington, DC 20007
T: 202.333.6230 F:

EXISTING
CONDITION

NOT FOR
CONSTRUCTION

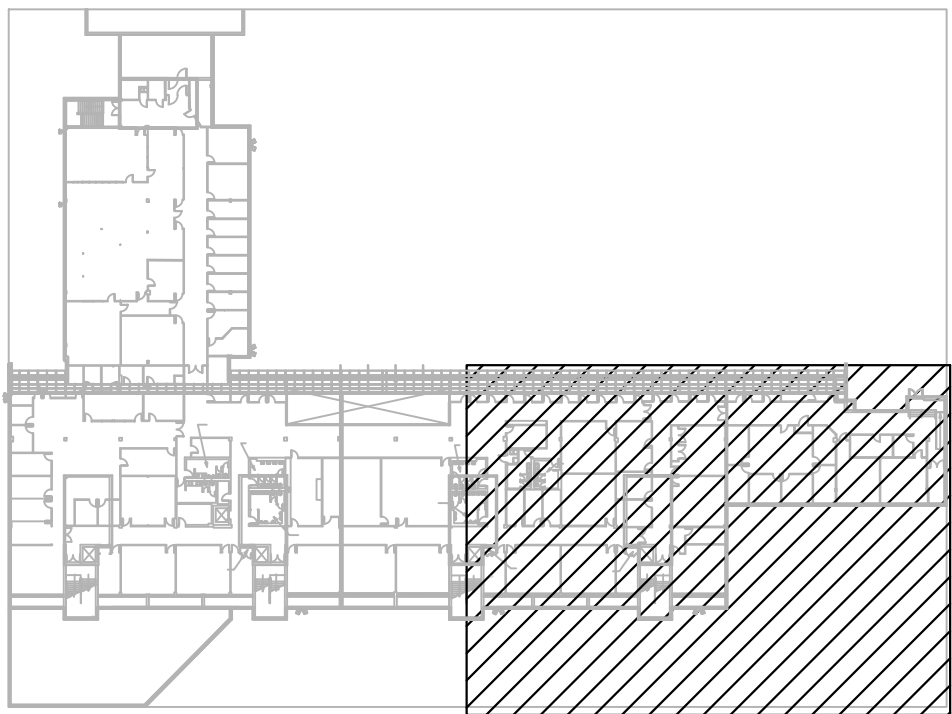
PROFESSIONAL CERTIFICATION:
I HEREBY CERTIFY THAT THESE DOCUMENTS WERE
PREPARED OR APPROVED BY ME, AND THAT I AM A DULY
LICENSED PROFESSIONAL ENGINEER UNDER THE LAWS
OF THE STATE OF MARYLAND, LICENSE NO. 17366,
EXPIRATION DATE MAY 28, 2015.

ISSUE 20122017
JOB B1704700
DRAWN SP
SCALE 1/8" = 1'-0"

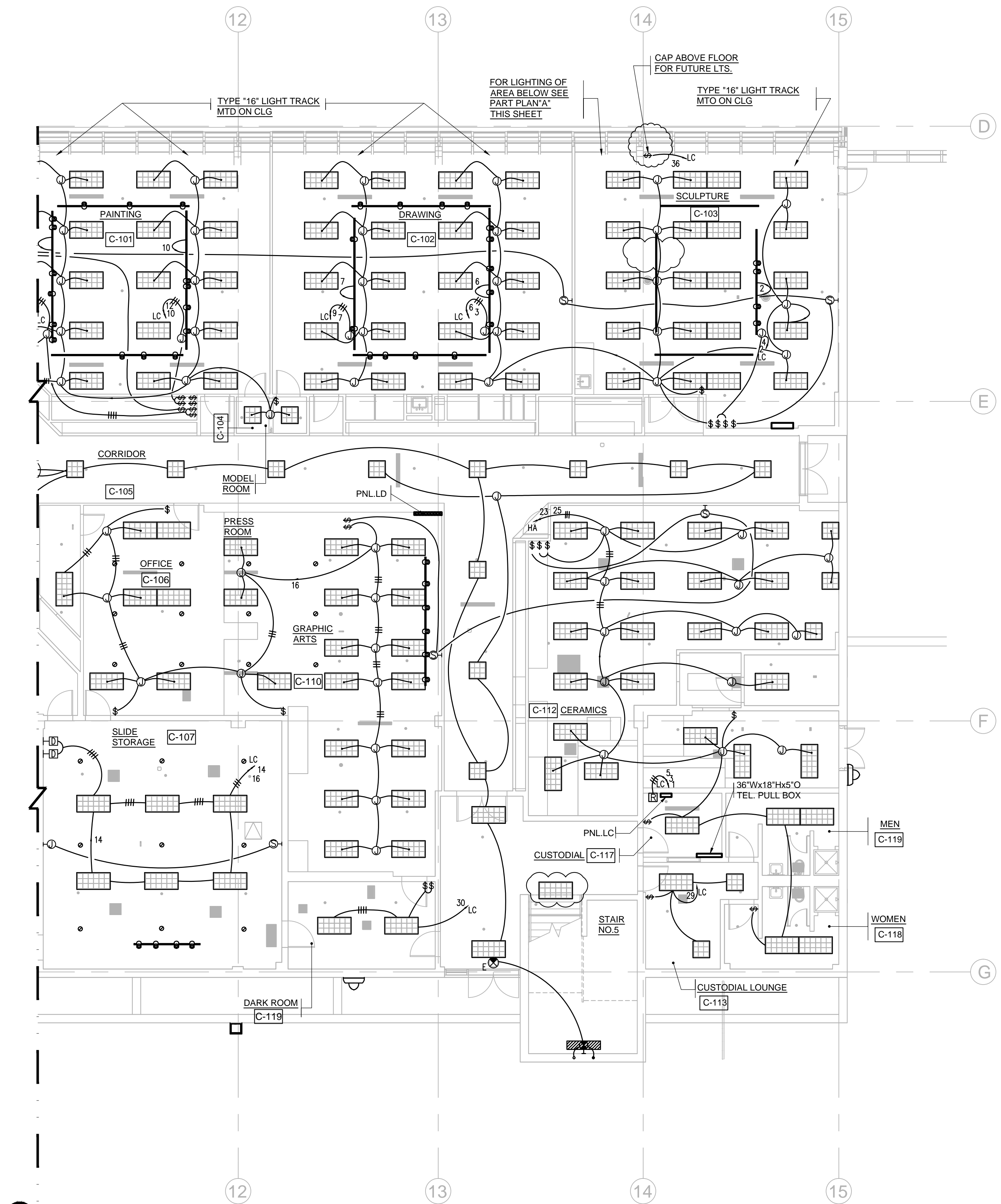
REVISIONS:

ELECTRICAL
LIGHTING
PART PLAN
LEVEL 01-C

EE-101C



KEY PLAN



ELECTRICAL LIGHTING PART PLAN LEVEL 01 -C
1/8" = 1'-0"

SECTOR®

