

Marlboro Hall  
Renovation and  
Addition

Prince George's  
Community College  
301 Largo Rd. Largo, MD  
20774

JCJARCHITECTURE  
ONE STATE STREET  
SUITE 900  
BOSTON, MA 02109  
617.532.6600

©2017 Weigand Associates, Inc.

- CONSULTANTS:
- Civil/ Geotech:  
Triad Engineering  
1075-D Sherman Avenue  
Hagerstown, MD 21740  
T: 301.797.6400 F: 301.797.2424
- Envelope:  
Coleman Consulting  
205 South Tyrone Road  
Baltimore, Maryland 21212  
T: 410.878.6566 F:
- Hazmat:  
Aerosol Monitoring & Analysis  
1331 Ashton Road, Suite A  
Hanover, Maryland 21076  
T: 410.684.3327 F:
- LANDSCAPE:  
Flours Teitel Landscape Architects  
800 N. Charles Street, Suite 300  
Baltimore, MD 21201  
T: 410.528.8395 F:
- LEED:  
Doo Consulting  
531 Piccadilly Rd.  
Towson, MD 21204  
T: 443.463.5859 F:
- FIRE PROTECTION  
Koffel Associates  
8815 Centre Park Drive, Suite 200  
Columbia, MD 21046  
T: 410.750.2246 F:
- MEP  
WAW Weigand Associates, Inc.  
20270 Goldenrod Land  
Germanstown, MD 20876  
T: 301.540.9060 F: 301.540.9061
- STRUCTURAL  
Silman Associates Structural Engineers  
1053 31st Street NW  
Washington, DC 20007  
T: 202.333.6230 F:

EXISTING  
CONDITION

NOT FOR  
CONSTRUCTION

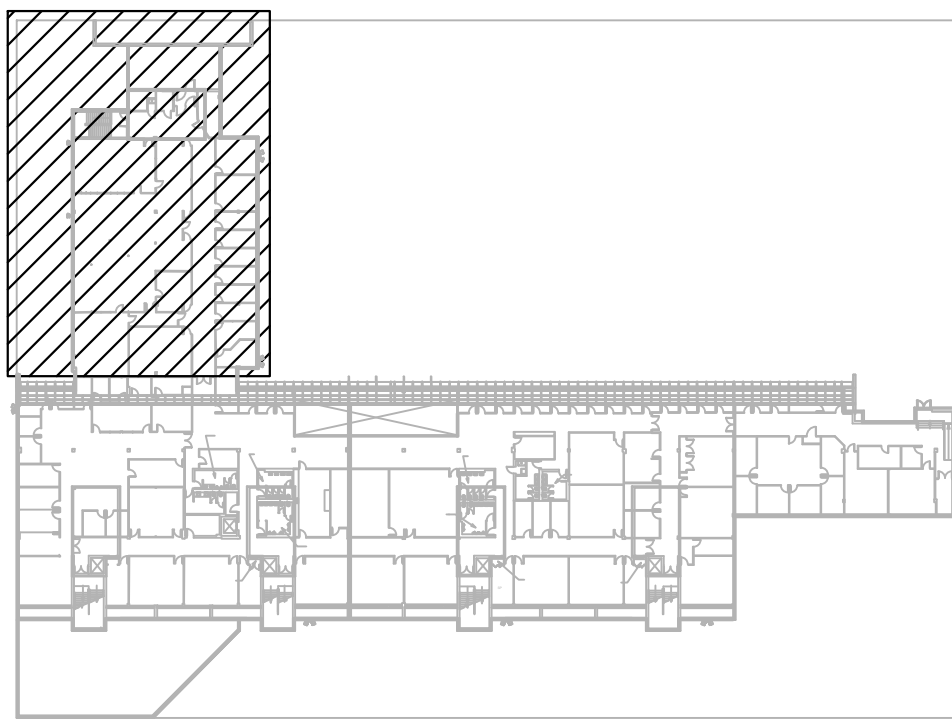
PROFESSIONAL CERTIFICATION:  
I HEREBY CERTIFY THAT THESE DOCUMENTS WERE  
PREPARED OR APPROVED BY ME, AND THAT I AM A DULY  
LICENSED PROFESSIONAL ENGINEER UNDER THE LAWS  
OF THE STATE OF MARYLAND, LICENSE NO. 17366,  
EXPIRATION DATE MAY 28, 2017.

ISSUE 20122017  
JOB B1704700  
DRAWN SP  
SCALE 1/8" = 1'-0"

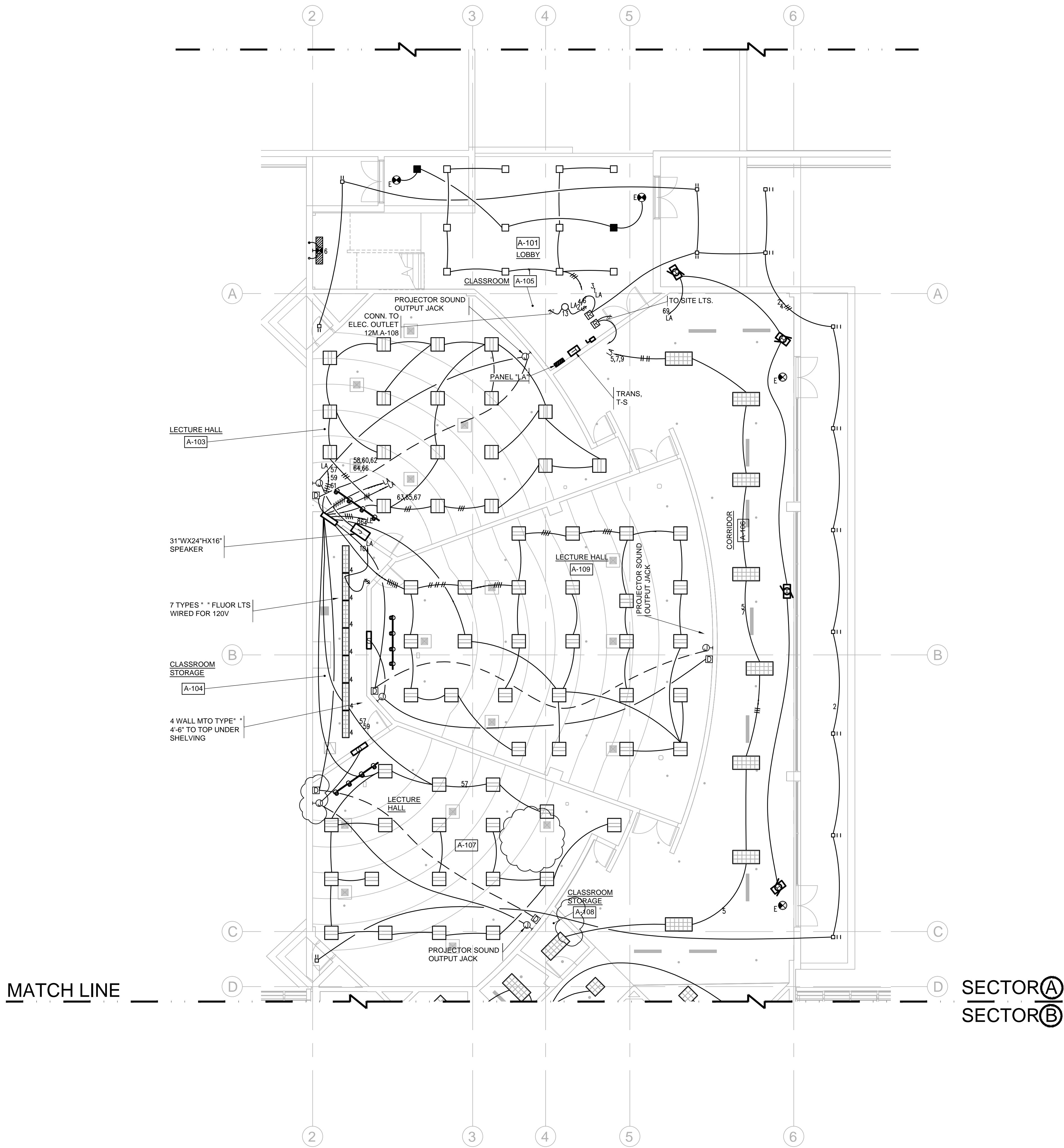
REVISIONS:

ELECTRICAL  
LIGHTING  
PART PLAN  
LEVEL 01 -A

EE-101A



KEY PLAN



ELECTRICAL LIGHTING PART PLAN LEVEL 01 -A  
1/8" = 1'-0"