

**Prince George's  
Community College  
301 Largo Rd, Largo, MD  
20774**

ONE STATE STREET  
SUITE 900  
BOSTON, MA 02109  
617.532.6600

© 2017 Weigand Associates, Inc.

## CONSULTANTS:

**CONSULTANTS:**  
Civil/ Geotech:  
Triad Engineering  
1075-D Sherman Avenue  
Hagerstown, MD 21740  
T: 301.797.6400 F: 301.797.2424  
Envelope:  
Coleman Consulting  
205 South Tyrone Road  
Baltimore, Maryland 21212  
T: 410.878.6566 F:

**Hazmat:**  
Aerosol Monitoring & Analysis  
1331 Ashton Road, Suite A  
Hanover, Maryland 21076  
T: 410.684.3337 F:

**LANDSCAPE:**  
Floura Teeter Landscape Architects  
800 N. Charles Street, Suite 300  
Baltimore, MD 21201  
T: 410 528 8395 F:

LEED:

LEED:  
Doo Consulting  
531 Piccadilly Rd.  
Towson, MD 21204  
T: 443.463.5859 F:

**FIRE PROTECTION**  
Koffel Associates  
8815 Centre Park Drive, Suite 200  
Columbia, MD 21045  
T: 410.750.2246 F:

MEP  
**WAI** Weigand Associates, Inc.  
20270 Goldenrod Lane  
Germantown, MD 20876  
T: 301.540.9060 F: 301.540.9061

**STRUCTURAL**  
Silman Associates Structural Engineers  
1053 31st Street NW  
Washington, DC 20007  
T: 202.333.6230 F:

SD SET

NOT FOR CONSTRUCTION

PROFESSIONAL CERTIFICATION:  
I HEREBY CERTIFY THAT THESE DOCUMENTS WERE  
PREPARED OR APPROVED BY ME, AND THAT I AM A DUL  
LICENSED PROFESSIONAL ENGINEER UNDER THE LAWS  
OF THE STATE OF MARYLAND, LICENSE NO. 17366,  
EXPIRATION DATE MAY 29, 2019.

ISSUE 2012/2017

ISSUE	2012/2017
IOR	B1704700

JOB B1  
DRAWN 62

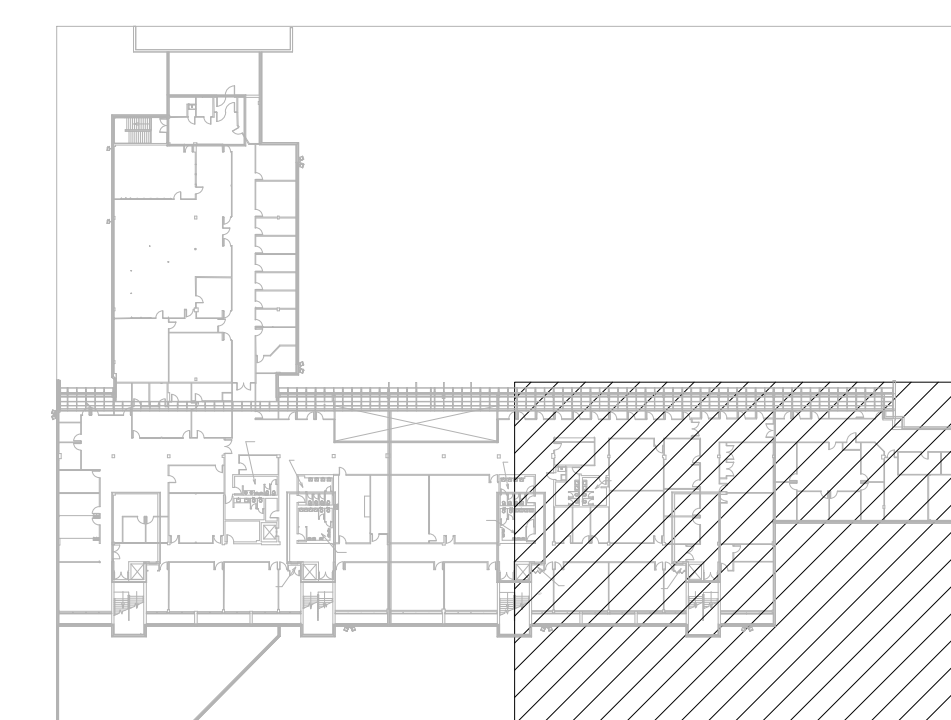
**DRAWN** SP

**SCALE** 1/8" = 1'-0"

SCALE \_\_\_\_\_

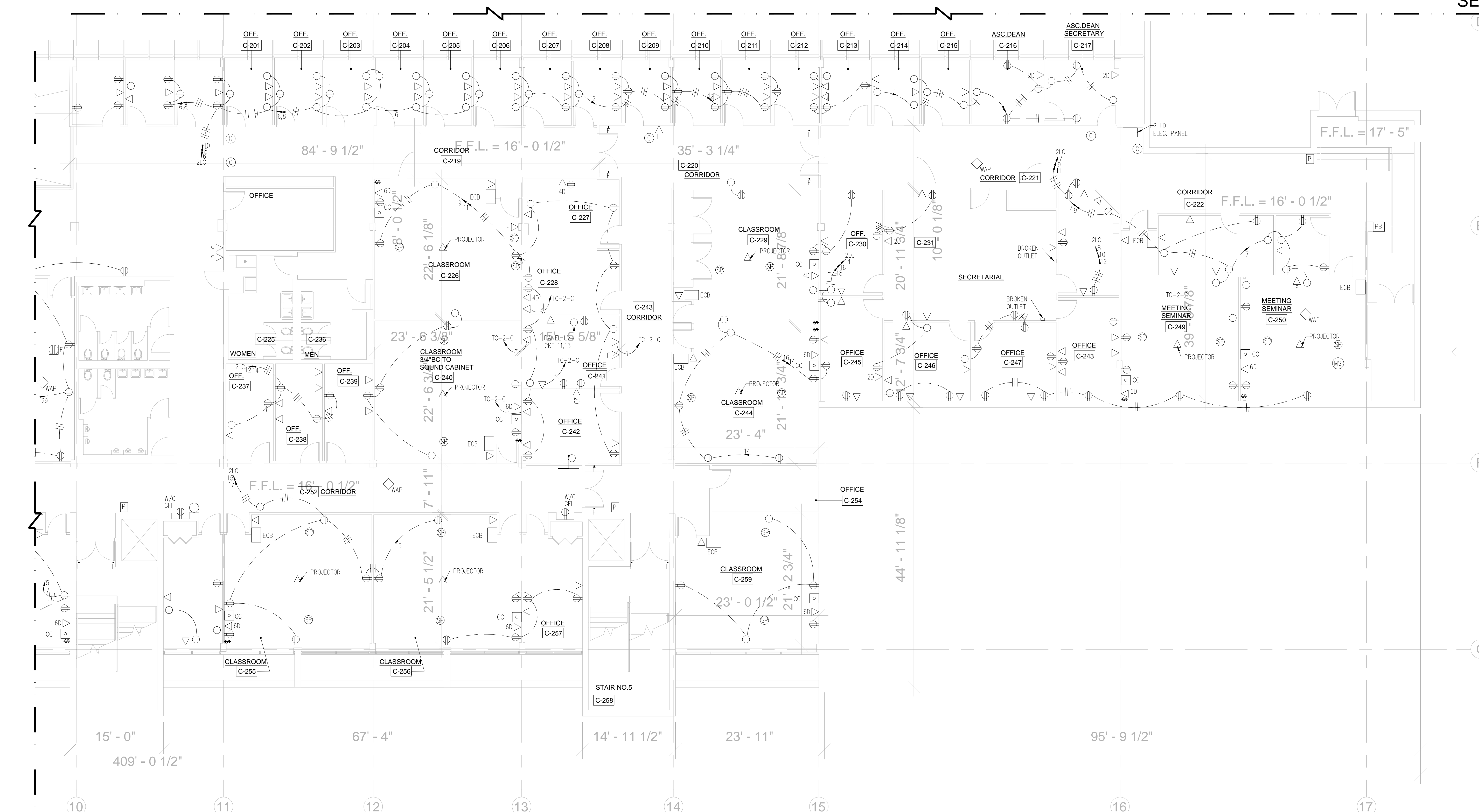
ELECTRICAL  
POWER  
PART PLAN  
LEVEL 02 - C

EE-202C



KEY PLAN

## SECTOR A



## SECTOR C

